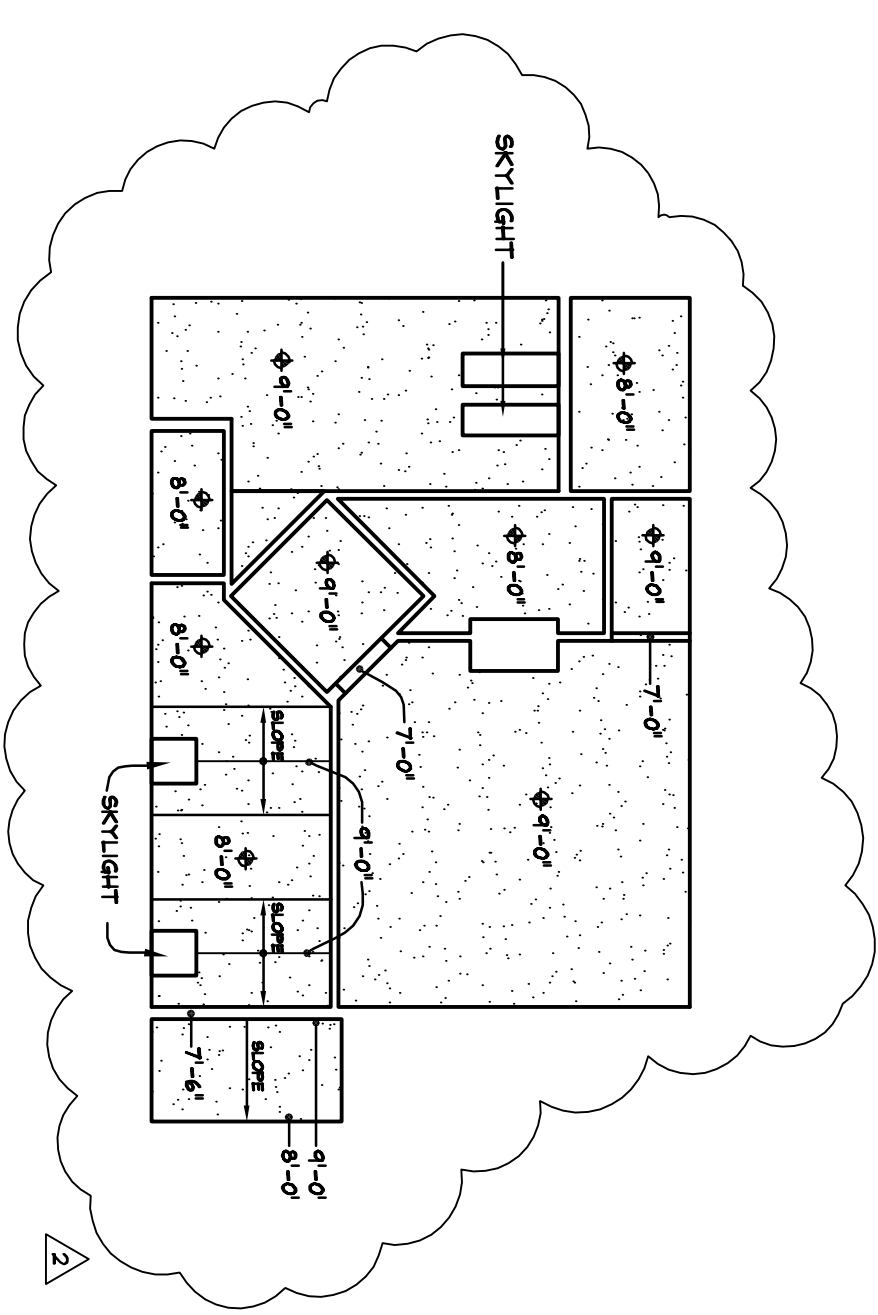


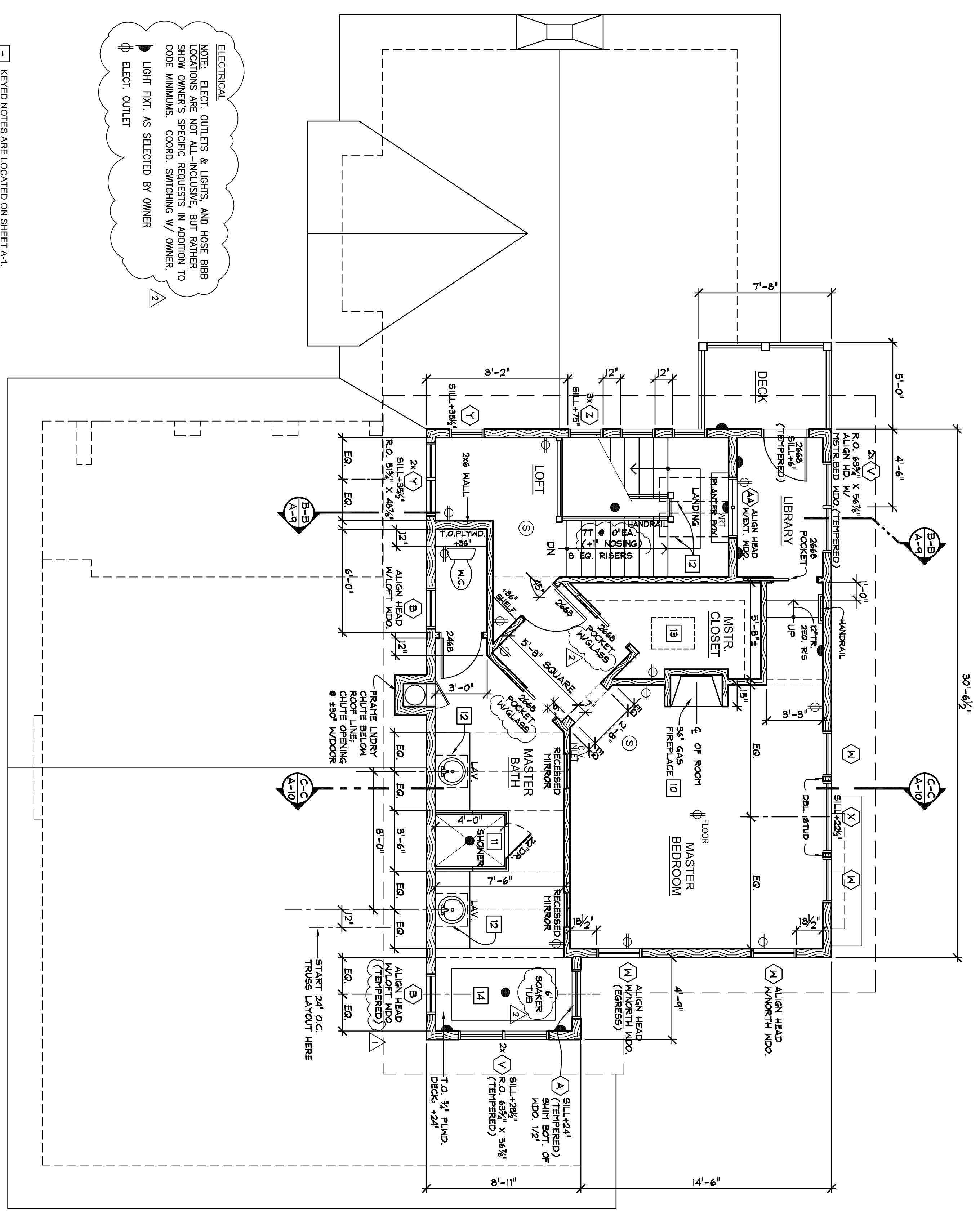
QTY	TYPE	SIZE	ROUGH OPENING	REMARKS
A 8	CUDH	2830	34 3/4" X 65 3/4"	SEE PLAN FOR COMBINATION UNITS
B 3	CAMN	2928	29" X 27 3/4"	
C 2	CUDH	2628	32 3/4" X 64 3/4"	
D 4	CUDH	2030	SEE PLAN FOR COMBINATION UNITS	
E 2	CUDHP	4086		
F 2	CLAD ULT.		41" X 56 3/8"	
G 6	CUDH	2024	26 3/4" X 56 3/8"	TRANSLUCENT GLAZING
H 2	MECH	4056	41" X 56 3/8"	
J 2	CUDH		34 3/4" X 59 3/8"	
K 2	CUDH		34 3/4" X 86 3/4"	BOTTOM SASH STATIONARY
L 1	CLAD MAGNUM PICTURE	2418	65 1/4" X 86 3/4"	
M 1	CUDH	2418	30 3/4" X 44 3/4"	
N 1	CUDH	2424	30 3/4" X 56 3/8"	
P 2	COH	1856	SEE PLAN FOR COMBINATION UNITS	
Q 1	COHP	2896		
R 1	COH	2048	21" X 47 3/8"	
S 2	CUDH	2928	34 3/4" X 60 3/8"	
T	NOT USED			
U	CLAD		41 3/8" X 70 3/8"	
V 4	CUDH	2624	SEE PLAN FOR COMBINATION UNITS	
W 4	CUDH	2632	32 3/4" X 72 3/4"	
X 1	CUDH	4870	50 3/4" X 72 3/4"	
Y 3	CUDH	2020	24 3/4" X 48 3/8"	SEE PLAN FOR COMBINATION UNITS
Z 3	CAMN	2424	29" X 29 3/4"	
AA 1	MECH	4048	41" X 48 3/4"	
BB 2	CUDH	2426	SEE PLAN	

- NOTES:
- WINDOWS NOTED ON PLANS ARE 'HARVIN'. SUBSTITUTIONS AS APPROVED BY OWNER.
 - TYPE: CUDH = CLAD ULTIMATE DOUBLE HUNG CAMN = CLAD AWNING COH = CLAD CASERASTER KCH = WOOD CASERASTER MCH = WOOD ULTIMATE DOUBLE HUNG MECH = WOOD BENCH CASERASTER ***P = PICTURE CUSTOM UNITS AS NOTED
 - ALL EXTERIOR WINDOWS SHALL HAVE LOW-E INSULATED GLAZING.
 - CLAD EXTERIOR FINISH SHALL BE 'STONE WHITE'. ALL EXTERIOR WINDOWS SHALL HAVE A 3" EXTRUDED FLAT CASING AT THE JAMB / HEAD & EXTRUDED REBEL TO PLAN FOR ROUGH OPENING SIZES AT COMBINATION UNITS.
 - SEE EXTERIOR ELEVATIONS FOR HINGE LOCATIONS.
 - ROUGH OPENING HEIGHTS ARE FROM FINISH GYPCRETE.



REFLECTED CEILING PLAN
SCALE: 1/8" = 1'-0"

NOTE: CEILING HEIGHTS NOTED ARE FROM GYPCRETE TO CEILING FINISH MATERIAL.

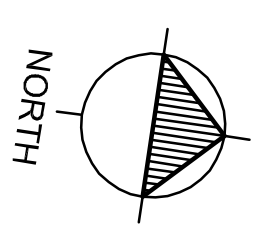


ELECTRICAL
NOTE: ELECT. OUTLETS & LIGHTS, AND HOSE BIBB LOCATIONS ARE NOT ALL-INCLUSIVE, BUT RATHER SHOW OWNER'S SPECIFIC REQUESTS IN ADDITION TO CODE MINIMUMS. COORD. SWITCHING W/ OWNER.
LIGHT FXT. AS SELECTED BY OWNER
ELECT. OUTLET

- NOTES:
- ALL FUEL-FIRED APPLIANCES MUST DRAW COMBUSTION AIR FROM THE EXTERIOR.
 - PER CODE - 100 CFM VENT MIN. @ KITCHEN, 50 CFM VENT MIN. @ BATHROOMS (SWITCH FAN SEPARATE)
 - SMOKE DETECTORS SHALL BE INSTALLED IN EACH BEDROOM, HALL AND NEAR STAIRWAY. EACH DETECTOR SHALL HAVE 110V BATTERY BACKUP PER 2008 IRC SECTION R313.

UPPER FLOOR PLAN
SCALE: 1/4" = 1'-0"

LIVING: 761 S.F.
DECK: 38 S.F.



BUILDING DESIGN BY ROBERT MUELLER



ARCHITECTURE & PLANNING
P.O. BOX 912 • COEUR D'ALENE, IDAHO • 83816
TEL: 208.765.2639 FAX: 208.765.4693



COWPER RESIDENCE

865 E. PINE RIDGE DRIVE
GOTHAM BAY, LAKE COEUR D'ALENE
HARRISON, IDAHO

UPPER FLOOR PLAN

PROJ. NO.: 0722
DATE: 5.14.09
DRAWN BY: KPV/CQ
CHECKED BY:
REVISION:
PERMIT: 8.21.09
OWNER:
REVISIONS: A 8.21.09

A-6