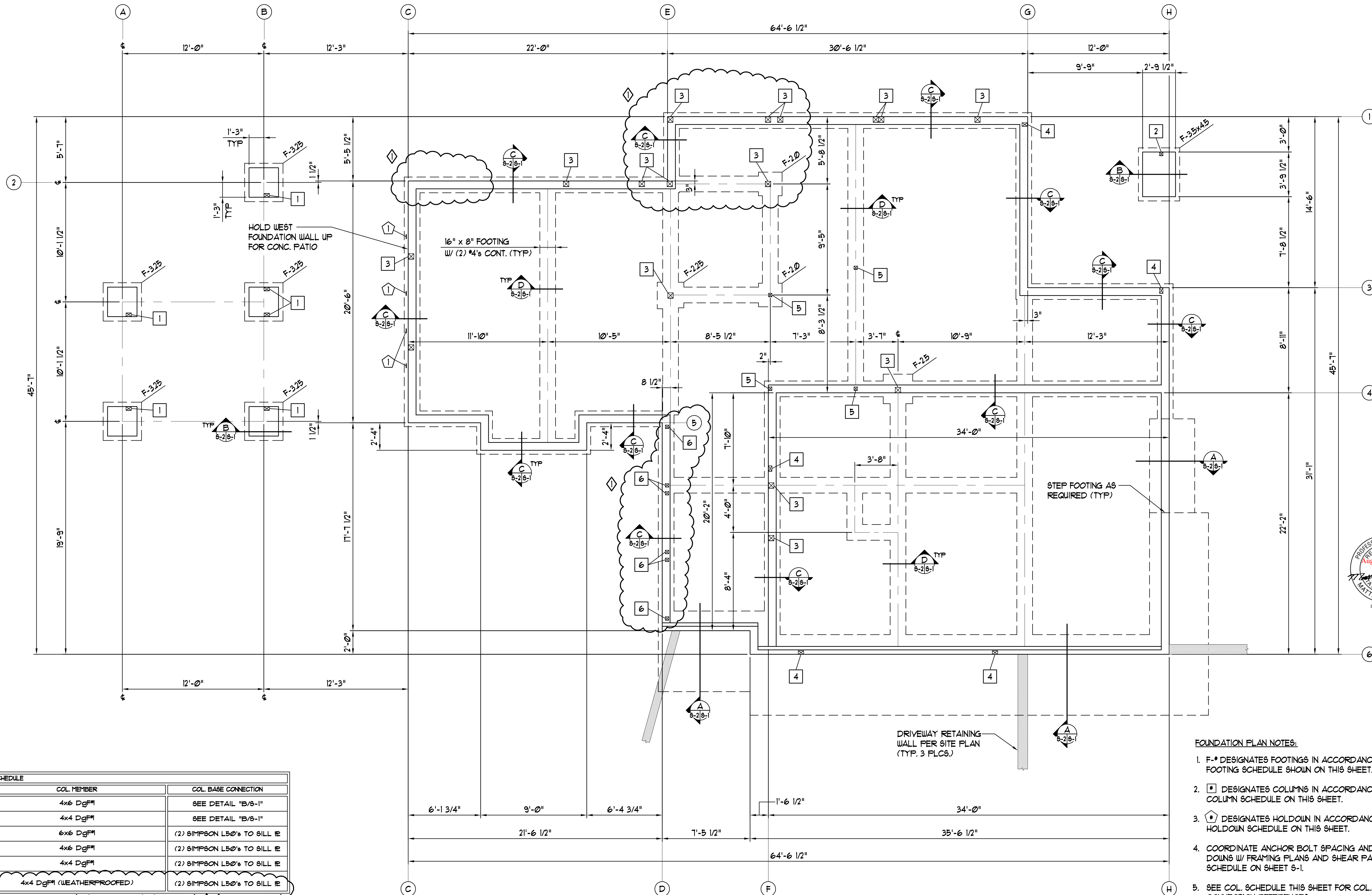


HOLDOWN SCHEDULE		
MARK	HOLDOWN	NOTES
①	SIMPSON PHD2	-

FOOTING SCHEDULE			
MARK	PLAN DIMENSIONS	FING THICKNESS	BOTTOM REINFORCEMENT
F-2 $\emptyset$	2'-0" x 2'-0"	8" MIN	(2) #4 EACH WAY
F-2.2B	2'-3" x 2'-3"	8" MIN	(2) #4 EACH WAY
F-2.5	2'-6" x 2'-6"	8" MIN	(3) #4 EACH WAY
F-3.2B	3'-3" x 3'-3"	8" MIN	(3) #4 EACH WAY
F-3.5x4.5	3'-6" x 4'-6"	8" MIN	#4 @ 12" O.C. EACH WAY



COLUMN SCHEDULE		
MARK	COL. MEMBER	COL. BASE CONNECTION
①	4x6 DgF#1	SEE DETAIL "B/S-1"
②	4x4 DgF#1	SEE DETAIL "B/S-1"
③	6x6 DgF#1	(2) SIMPSON L5 $\emptyset$ 'S TO SILL IE
④	4x6 DgF#1	(2) SIMPSON L5 $\emptyset$ 'S TO SILL IE
⑤	4x4 DgF#1	(2) SIMPSON L5 $\emptyset$ 'S TO SILL IE
⑥	4x4 DgF#1 (WEATHERPROOFED)	(2) SIMPSON L5 $\emptyset$ 'S TO SILL IE

FOUNDATION PLAN  
SCALE: 1/4" = 1'-0"

NOTE: SLOPE TOP OF CONCRETE WALLS  
W/ GRADE PER ARCHITECTURAL

FOUNDATION PLAN NOTES:

1. # DESIGNATES FOOTINGS IN ACCORDANCE W/ THE FOOTING SCHEDULE SHOWN ON THIS SHEET.
2. ■ DESIGNATES COLUMNS IN ACCORDANCE W/ THE COLUMN SCHEDULE ON THIS SHEET.
3. ◇ DESIGNATES HOLDOWN IN ACCORDANCE W/ THE HOLDOWN SCHEDULE ON THIS SHEET.
4. COORDINATE ANCHOR BOLT SPACING AND HOLD DOWNS W/ FRAMING PLANS AND SHEAR PANEL SCHEDULE ON SHEET S-1.
5. SEE COL. SCHEDULE THIS SHEET FOR COL. BASE CONNECTION REFERENCES.
6. SEE SHEET S-1 FOR ADDITIONAL STRUCTURAL NOTES.



HOIT ENGINEERING  
1423 E. Lacey Ave.  
Hayden, Idaho 83835  
(208) 772-1100

COWPER RESIDENCE  
865 E. PINE RIDGE DRIVE - GOTHAM BAY  
HARRISON, IDAHO

REVISIONS	
NO.	DATE
1	8/27/08

FOUNDATION PLAN			
PROJ #	DATE	SCALE	DRAWN BY
080023	4/28/09	1/4" = 1'-0"	PH

S-2