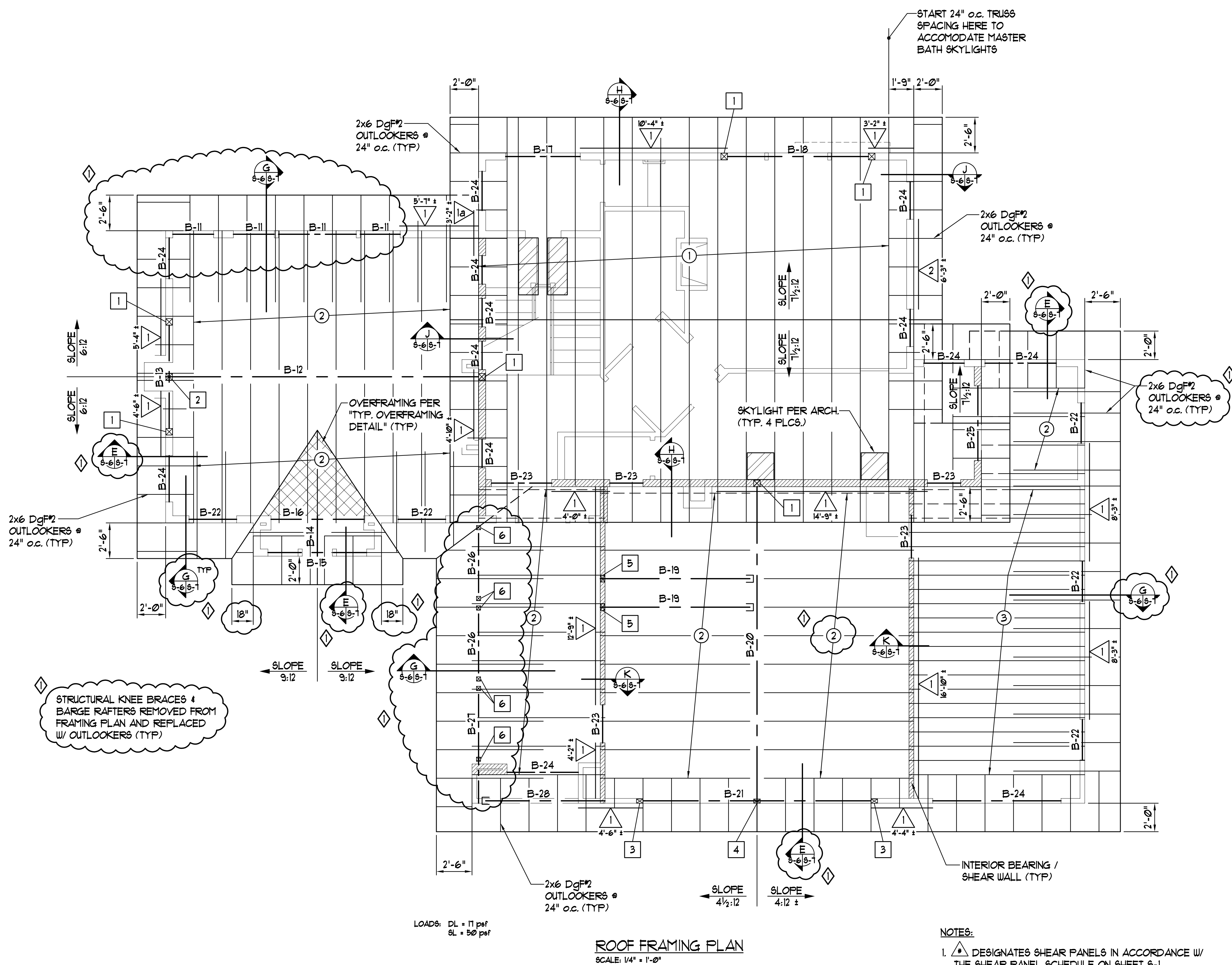


MARK	BEAM MEMBER	COMMENTS
B-11	(2) 2x8's DgF#2	-
B-12	5 1/8" x 18" GLB 24F-18E W6	-
B-13	5 1/8" x 9" GLB 24F-18E W6	8'-3" LONG ± (VERIFY)
B-14	2x8 DFL No. 2	-
B-15	(2) 2x10's DFL No. 2	-
B-16	(3) 2x8's DFL No. 2	-
B-17	(2) 2x10's DFL No. 2	-
B-18	5 1/8" x 10 1/2" GLB 24F-18E W6	-
B-19	3 1/2" x 9 1/4" 20E PARALLAM PSL (BEAM TO SUPPORT (1) EQUIPMENT HANGER PER DETAIL "A/S-6")	HANG FROM B-20 W/ SIMPSON HHU8410 x 8LD206* (VERIFY)
B-20	5 1/8" x 19 1/2" GLB 24F-18E W6	-
B-21	3 1/2" x 21" 20E PARALLAM PSL	-
B-22	(2) 2x10's DFL No. 2	-
B-23	(2) 2x10's DFL No. 2	-
B-24	(2) 2x10's DFL No. 2	-
B-25	(2) 2x10's DFL No. 2	-
B-26	6x8 DgF#1	HIDDEN IN SOFFIT
B-27	6x8 DgF#1 (8'-3" LONG ± VERIFY)	HIDDEN IN SOFFIT
B-28	(2) 2x10's DFL No. 2 (HIDDEN IN SOFFIT)	HANG FROM B-27 W/ SIMPSON U210-2

MARK	COL. MEMBER	COL. CAP CONNECTION	COL. BASE CONNECTION
1	6x6 DgF#1	SIMPSON EPC66	SEE FOUNDATION PLAN
2	6x6 DgF#1	SIMPSON EPC66	SIMPSON PC66 UPSIDE DOWN OFF BEAM BELOW
3	4x6 DgF#1	SIMPSON EPC46	SEE FOUNDATION PLAN
4	4x6 DgF#1	SIMPSON EPC46	SIMPSON PC46 UPSIDE DOWN OFF BEAM BELOW
5	4x6 DgF#1	SIMPSON EPC44	SEE FOUNDATION PLAN
6	4x4 DgF#1 (WEATHERPROOFED)	SIMPSON EPC64	SEE FOUNDATION PLAN

MARK	JOIST	NOTES
1	PRE-MANUFACTURED TRUSSES @ 24" o.c.	SEE ARCH. FOR GEOMETRY
2	2x10's DgF#2 @ 24" o.c.	HANG W/ SIMPSON L89U210 WHERE APPLICABLE
3	2x10's DgF#2 @ 12" o.c.	HANG W/ SIMPSON L89U210 WHERE APPLICABLE



- NOTES:
- DESIGNATES SHEAR PANELS IN ACCORDANCE W/ THE SHEAR PANEL SCHEDULE ON SHEET S-1.
  - DESIGNATES COLUMNS IN ACCORDANCE W/ THE COLUMN SCHEDULE ON THIS SHEET.
  - DESIGNATES ROOF JOISTS IN ACCORDANCE W/ THE JOIST SCHEDULE ON THIS SHEET.
  - B-# DESIGNATES BEAM IN ACCORDANCE W/ THE BEAM SCHEDULE ON THIS SHEET.
  - ALL TRUSS CONNECTIONS PER TRUSS MANUFACTURER.
  - BEAMS & HEADERS TO BE SUPPORTED BY DBL 2x STUD COLUMNS MIN. UNLESS OTHERWISE NOTED.
  - VERIFY ALL OVERHANG DIMENSIONS WITH ARCHITECTURAL DRAWINGS.
  - SEE SHEET S-1 FOR ADDITIONAL FRAMING NOTES.

**HOIT ENGINEERING**  
1423 E. Lacey Ave. 83838  
Hayden, Idaho  
(208) 772-1100

**COWPER RESIDENCE** - GOTHAM BAY  
885 E. PINE RIDGE DRIVE  
HARRISON, IDAHO

PROJ #	DATE	SCALE	DRAWN BY
080023	5/15/09	1/4" = 1'-0"	PH